

Bunnings Warehouse  
**RADAR STREET,**  
**Lytton**



## Project Data Sheet

**Client:**  
 Matrix Commercial and Industrial Pty Ltd

**Project Location:**  
 Radar Street, Port West

**Contract Value:**  
 \$1,900,000.00

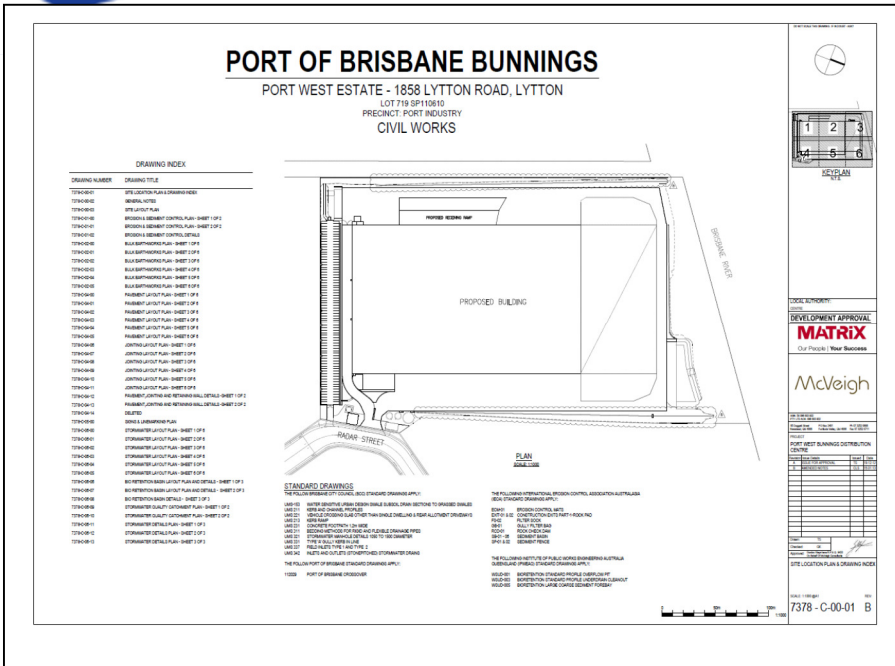
**Year completed:**  
 2013

**Scope:**  
 Earthworks  
 Drainage  
 Asphalt surfacing of Car Park  
 Kerb and channel

### ALL ENQUIRIES

**Phone:** +61 7 3807 9346  
[admin@civcorp.com.au](mailto:admin@civcorp.com.au)  
[civcorp.net.au](http://civcorp.net.au)

**3 Production Street  
 Beenleigh Qld 4207**



Civcorp completed all of the bulk earthworks, stormwater drainage and the construction of the asphalt car park for the new Bunnings Distribution Warehouse located at Lytton, part of the Port of Brisbane Corporation.

Civcorp also completed the final trim of the subgrade to allow the concreters to place the concrete for the new structural slabs on a completed subgrade. This entailed trimming around 50,000m<sup>2</sup> of sand using our laser guided equipment.

The project also involved removing and replacing unsuitable subgrade with sand carted in from completed preload projects in other parts of the Port.

During the installation of the stormwater infrastructure dewatering was required due to the high water table. Civcorp was able to complete these works quickly and efficiently using our fleet of dewatering pumps and associated equipment.



This project was awarded to Civcorp by Matrix Pty Ltd on a recommendation from the Port of Brisbane Corporation

An extra scope item that was awarded to Civcorp following construction was a package of works to repair defects left by other trades including landscaping reinstatement, environmental controls, pit remediation, stabilisation of drainage channels and the cleaning of pipes and overflow areas.

