



# NUDGEE ROAD, INTERSECTION Hendra



## Project Data Sheet

**Client:**  
BMI Group

**Project Location:**  
538 Nudgee Road,  
Hendra

**Contract Value:**  
\$25,000

**Year completed:**  
2015

**Scope:**  
Earthworks  
Drainage  
Traffic signals  
Sprayed bituminous and asphaltic surfacing  
Kerb and channel  
Signage  
Line marking  
Footpaths  
Tactiles



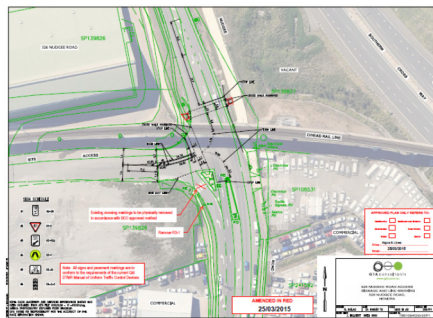
Civcorp was referred to the BMI Group as a preferred Civil Contractor and since then we have been working with them on a range of upgrade projects.

This project involved the installation of new traffic signals at the intersection of BMI's newly acquired resource recovery facility, also known as the old Airport Link Shed.

Civcorp worked with a specialist electrical subcontractor, Allied Traffic Services, to upgrade the intersection and install new signals.

Part of these works included the installation of new pram ramps, kerbing, landscaping, drainage, median islands, signage and pavement markings to Brisbane City Council specifications.

The works were quickly completed in just two days and received approval from Brisbane City Council immediately under a Development Assessment Application.



### ALL ENQUIRIES

**Phone:** +61 7 3807 9346  
[admin@civcorp.com.au](mailto:admin@civcorp.com.au)  
[civcorp.net.au](http://civcorp.net.au)

**3 Production Street  
Beenleigh Qld 4207**