



NUDGEE ROAD, INTERSECTION Hendra



Project Data Sheet

Client:
BMI Group

Project Location:
538 Nudgee Road,
Hendra

Contract Value:
\$25,000

Year completed:
2015

Scope:
Earthworks
Drainage
Traffic signals
Sprayed bituminous and asphaltic
surfacing
Kerb and channel
Signage
Line marking
Footpaths
Tactiles

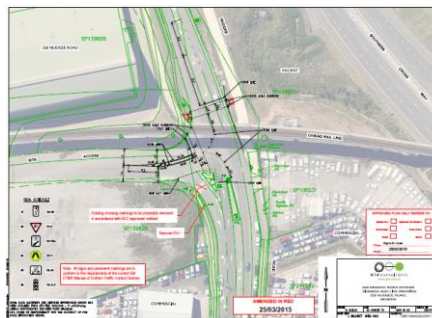
Civcorp was referred to the BMI Group as a preferred Civil Contractor and since then we have been working with them on a range of upgrade projects.

This project involved the installation of new traffic signals at the intersection of BMI's newly acquired resource recovery facility, also known as the old Airport Link Shed.

Civcorp worked with a specialist electrical subcontractor, Allied Traffic Services, to upgrade the intersection and install new signals.

Part of these works included the installation of new pram ramps, kerbing, landscaping, drainage, median islands, signage and pavement markings to Brisbane City Council specifications.

The works were quickly completed in just two days and received approval from Brisbane City Council immediately under a Development Assessment Application.



ALL ENQUIRIES

Phone: +61 7 3807 9346
admin@civcorp.com.au
civcorp.net.au

3 Production Street
Beenleigh Qld 4207